



KINGSBURY GREEN ACADEMY

How effective is global governance of sovereignty and territorial integrity??

What is the role of global governance in conflict?

What are the contemporary challenges to sovereign state authority?

What is meant by sovereignty and territorial integrity?

What are the issues associated with unequal flows of global migration??

Why has migration become increasingly complex??

What are the contemporary patterns of global migration?

How do we understand place?

How does economic change influence patterns of social inequality?

Who are the players that influence economic change?

How are places created through place making processes?

What are the global patterns of disease and can factors be identified that determine these?

What are the threats to periglacial landscapes?

What are periglacial landscapes?

How have ice sheets changed a landscape?

How have valley glaciers affected a landscape over time?

How is Rio changing?



What are the factors affecting urban change?

How is Bristol changing?

Can we manage climate change?

Is climate change affecting our weather?

What were the impacts of Hurricane Katrina?

What are natural hazards?

How does our planet work?

How can we provide energy in Nepal?

How do we recover from natural disasters?

How do we recover from natural disasters?

Geography Expedition - key skills for Geography

Our Continent - what is Europe like?

School fieldwork - what ecosystems are there in school

Our Country - who lives in our country and where

YEAR 13

YEAR 12

11

10

YEAR 9

YEAR 8

YEAR 7

NEA Fieldwork

Snowdonia Fieldwork

Bristol Urban fieldwork

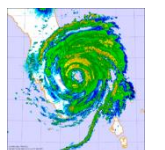
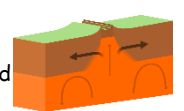
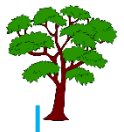
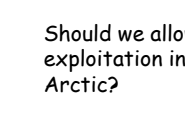
Dorset Coast fieldwork

Rainforest fieldwork

Bristol Virtual fieldwork

Coasts Fieldwork

School fieldwork - what ecosystems are there in school



Why is the north of Italy different to the South?

Flooding in the UK and Bangladesh

welcome

'Without Geography you're nowhere.'