

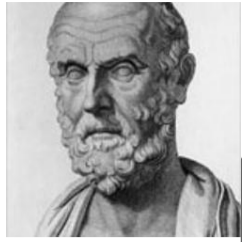
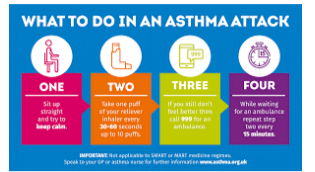
# Level 3 Cambridge Technicals in Health & Social Care

The Cambridge Technicals in Health and Social Care allows students to develop their skills and knowledge in preparation for further study or the workplace. Students apply their skills and knowledge to offer appropriate care and support and build positive relationships to meet the needs of those they are working with.

Mandatory units include building positive relationships in H&SC settings, equality and diversity, Health, safety and security in care settings and anatomy and physiology.



KINGSBURY GREEN ACADEMY



REVISION



Revision



Safety procedures and measures



Safeguarding



Effects on service users if values are not applied

Benefits of applying person centered values

Person centered values

Effective communication

Explanation of target audience for health promotion with barriers and benefits

Delivery of health promotion campaign

Principles of care in Health and Social Care

Evaluation of health campaign

Health Promotion Campaign

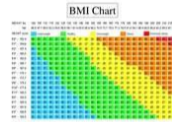
Current public health issues and the impact on society.

Plan and create a health promotion campaign

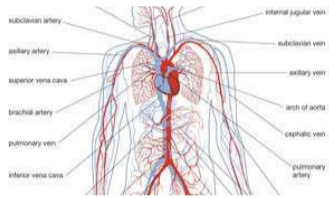
Leading a healthy life style

Current health promotion campaigns and their benefits

How security measures protect services users and staff



Infection prevention



The importance of a healthy society

Health Promotion Campaigns

YEAR 11



Public health challenges for society

Factors influencing health and wellbeing

Case Study Work – Growth & Development through a life stage.

Expected and unexpected life events

Social Development across life stages

Emotional Development across life stages

Intellectual Development across life stages

Physical Development across life stages

Qualities that to contribute to effective communication

Factors affecting growth and development

Sources of support that individuals may need

Case Study Work – Factor affecting growth and development (OCR)

Interview Work – Impact of two life events

Interview Work – Researching formal, informal and charity based support for individuals.



11 – 18 years Adolescence

46 – 65 years Middle Adulthood

65+ years Older Adulthood

YEAR 10

Disorders of the digestive system with symptoms

First Aid – Burns and Scalds

Function of the digestive system



Supporting Individuals Through Life Events

Basics of the digestive system

The importance of reporting incidents during practical

YEAR 8

Macro/Micro Nutrients

Disorders related to the digestive system

The structure of the digestive system

YEAR 7

Basic hygiene procedures to prevent contamination and infection e.g. blue plasters



welcome

Health and Social Care

“Health is the greatest of human blessings” – Hippocrates

“You do not know what you will find, you may set out to find one thing and end up by discovering something different” – Alexander Fleming